

## ABOUT US:

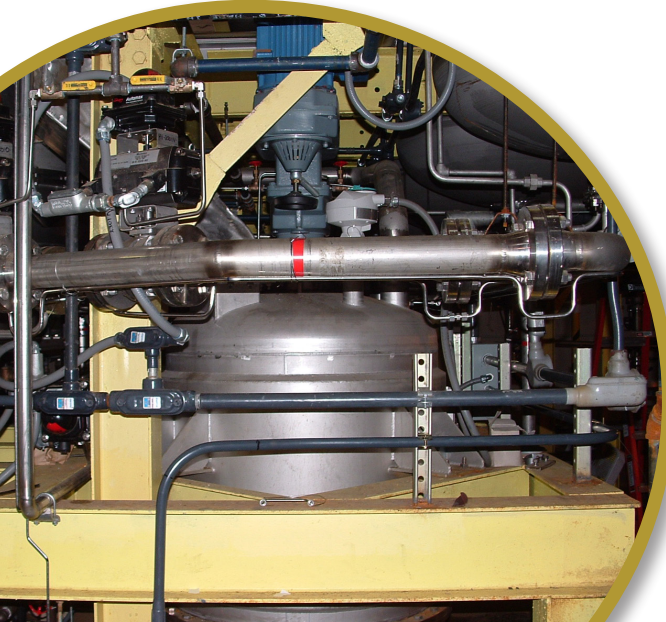
**WACO HAS BEEN PROVIDING  
SUPERIOR CONTRACTING  
SERVICES SINCE 1963**



## OTHER LOCATIONS:

Waco, Inc. is a privately-owned, diversified contracting firm providing a full scope of mechanical construction and maintenance services.

Headquartered in Richmond, Virginia, we have multiple locations to serve the East Coast and Midwest regions of the United States. With a long-standing reputation of excellence and years of experience, we are confident in our ability to solve your problems through progressive and innovative solutions.



---

38592 Brett Way, Suite 7  
Mechanicsville, MD 20659  
**Phone: (301) 290-1333**  
Toll Free: (888) 742-7219

---

844 Cottontail Trail  
Mt. Crawford, VA 22841  
**Phone: (540) 434-7390**

---

6620 Roanoke Road  
Shawsville, VA 24162  
**Phone: (540) 585-1420**

---

11839-A Canon Blvd.  
Newport News, VA 23606  
**Phone: (757) 873-2205**

---

162 Industrial Drive, Units F&G  
Troy, VA 22974  
**Phone: (804) 822-1416**

---

208 Martin Luther King Jr. Drive  
Bladenboro, NC 28320  
**Phone: (910) 648-5468**

---

710 West Locust Street  
Covington, VA 24426  
**Phone: (540) 962-5161**

---



## MECHANICAL SERVICES



[www.wacoinc.net](http://www.wacoinc.net)

### CORPORATE OFFICE:

5450 Lewis Road  
Sandston, VA 23150  
**(804) 222-8440**



# Mechanical Construction/ Maintenance Services

## TURN-KEY PERFORMANCE

Waco Inc. is an accomplished mechanical construction and maintenance contractor. Since 1963, we have served businesses, industries, and institutions while completing complex projects for some of the nation's largest, most established Fortune 500 companies.

Utilizing our own trained workforce, Waco self-performs a diverse range of industrial mechanical services. We complete turn-key projects economically and without trade disruption or scheduling issues.

Waco's purpose is to bring unrivaled expertise to every job, from large, multi-faceted projects to short-term, individual tasks.

### ***We Provide:***

- Process Piping
- Process Equipment - Erection, Relocation, Alignment
- Mechanical Demolition
- Material Handling, Erection, Alignment
- Welding - National Board ASME Certified
- Utility Piping Systems
- Breeching / Duct Work
- Work Platforms - Structural Steel
- Pressure Vessels: R Stamp
- Boilers: Field Erected or Package Installation
- Field Engineering
- Augment Customer's Staff (Technical or Craft)
- Maintenance (Ongoing or Shutdown)
- Engineering, Administrative, Pipe Fitting, Welding, Rigging, Millwright, Electrical, Sheet Metal, Carpentry, Concrete Masonry



[www.wacoinc.net](http://www.wacoinc.net)

